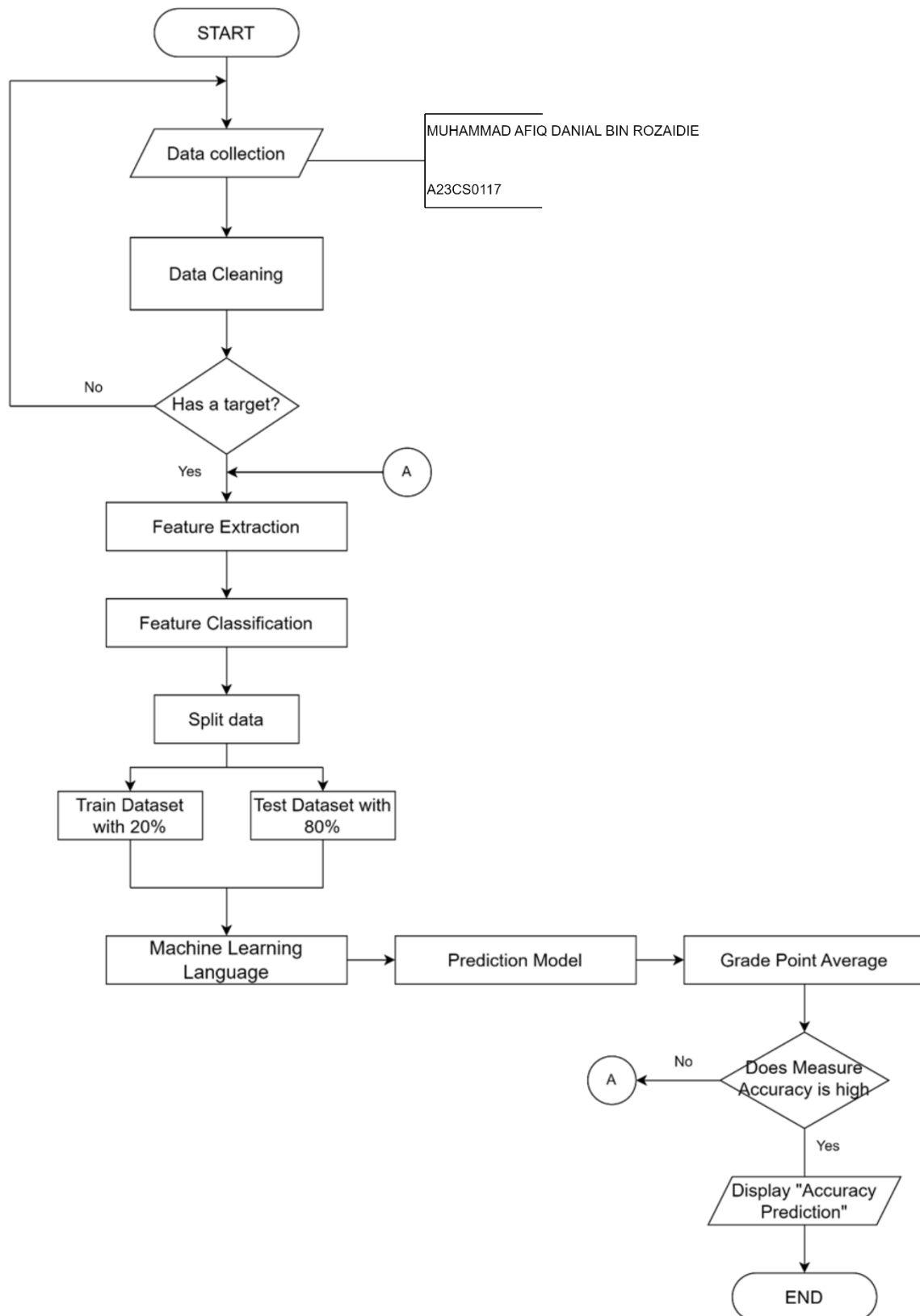


## SET 1



## SET 2

1. Start
2. deposit = 0.10 // MUHAMMAD AFIQ DANIAL BIN ROZAIDIE A23CS0117
3. Get the name, duration, package, customer\_Type
4. if customer\_Type = Regular
  - 4.1 discount = 0.10
5. else
  - 5.1 discount = 0
6. End if
7. if package = 1
  - 7.1 price = 150
8. else
  - 8.1 price = 250
9. End if
10. price = rental \* duration
11. deposit\_Payment = deposit \* price
12. total\_Discount = discount \* price
13. balance = price – total\_Discount
14. Display name, deposit\_Payment, total\_Discount, balance
15. End

### SET 3

1. Start
2. product = 1 // MUHAMMAD AFIQ DANIAL BIN ROZAIDIE A23CS0117
3. Enter num
4. while (num != 0)
  - 4.1 product = product \* num
  - 4.2 enter num
5. end while
6. if (product % 4 = 0 && product % 5 = 0 && product % 7 = 0)
  - 6.1 display product, "is multiple of 4, 5 and 7"
7. else if (product % 4 = 0 && product % 5 = 0)
  - 7.1 display product, "is multiple of 4 and 5"
8. else if (product % 4 = 0 && product % 7 = 0)
  - 8.1 display product, "is multiple of 4 and 7"
9. else if (product % 5 = 0 && product % 7 = 0)
  - 9.1 display product, "is multiple of 5 and 7"
10. else if (product % 4 = 0)
  - 10.1 display product, "is multiple of 4"
11. else if (product % 5 = 0)
  - 11.1 display product, "is multiple of 5"
12. else if (product % 7 = 0)
  - 12.1 display product, "is multiple of 7"
13. end if
14. Stop

## SET 4

